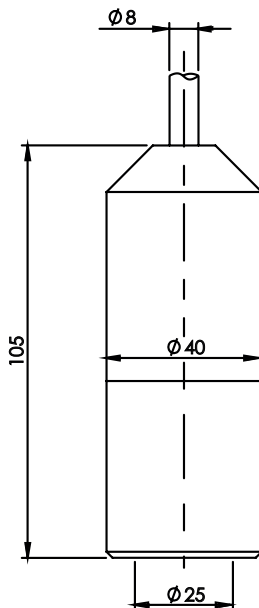
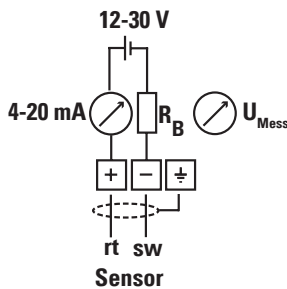


**Level probe with induction protection.  
Also suitable for EX zone and wells.**



- Induction protection, ATEX optional.
- High-end probe, robust and precise.
- For industrial or outdoor measurement.



**Technical specifications:**

<b>Measuring Ranges:</b>	0 - 40 mbar to 0 - 10 bar, relative. (0 - 4 kPa to 0 - 1000 kPa) xxx = Measuring range in mbar (hPa)
<b>Output:</b>	4 ... 20 mA, 2-wire principle
<b>Induction protection:</b>	Integrated over voltage protection (Lightning Protection) in the probe electronics.
<b>Supply voltage:</b>	10 ... 30 V DC
<b>Measuring cell:</b>	Large capacitive measuring cell Ceramic $Al_2O_3$ , with protective cap Standard equipped in front of the cell.
<b>Variation:</b>	< 0.25% of FSR, temperature drift < 0.02% / K
<b>Response time:</b>	Correction time < 200 ms, startup time < 500 ms
<b>Operating range:</b>	-20 ... +80 °C (higher upon request)
<b>Probe head:</b>	IP68 Stainless steel 1.4404, diameter 40 mm
<b>Weight:</b>	Probe head approx. 0.5 kg + each 5 m cable 0.3 kg
<b>Submersion cable:</b>	Ø = 8 mm, with air pressure compens. capillary. - blue PE, with drinking water certification o - black PUR for oils.
<b>Main areas of Application:</b>	Tanks, external measurements, hydraulic engineering, hydropower, wells, basins, drinking water, etc. EX version optional. Protective cap or open measuring cell.

**Article-Code:**

