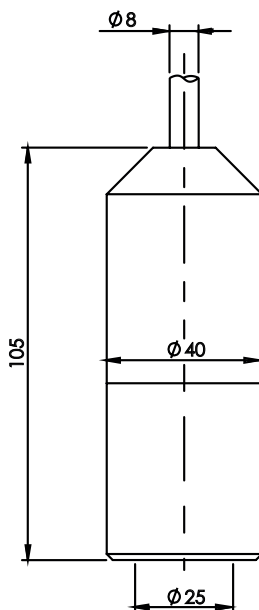
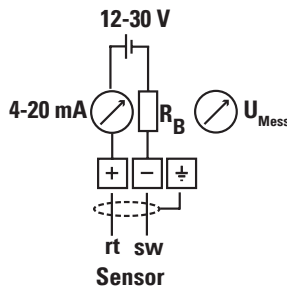


- High-end probe, robust and precise.
- For industrial or outdoor measurement.
- ATEX optional.



**Submersible probe – high-quality and robust.
Also suitable for EX zones and industrial tanks.**

Technical specifications:

- Measuring ranges:** 0 - 40 mbar to 0 - 10 bar, relative.
(0 - 4 kPa to 0 - 1000 kPa)
xxx = Measuring range in mbar (hPa)
- Output:** 4 ... 20 mA, 2-wire principle
- Induction protection:** No over voltage/lightning protection.
(For induction protection, see TDS-80-xxx)
- Supply voltage:** 10 ... 30 V DC
- Measuring cell:** Large capacitive measuring cell, ceramic Al_2O_3 .
Standard with protective cap in front of the cell.
- Variation:** < 0.25% of FSR, temperature drift < 0.02% / K
- Response time:** Correction time < 200 ms, startup time < 500 ms
- Operating range:** -20 ... +80 °C (higher upon request)
- Probe head:** Ø = 40 mm, IP68
- Stainless steel 1.4404 or
- Plastic PP (but then EX not available)
- Weight:** Probe head approx. 0.5 kg + each 5 m cable 0.3 kg
- Submersion cable:** Ø = 8 mm, with air pressure compensation capillary. Blue PE, with drinking water certification or black PUR, for oils.
- Main areas of application:** Industrial tanks, large oil tanks, hydraulic engineering, drinking water, sewage plants, etc.
EX version optional.
Protective cap or open measuring cell.

Article-Code:

<p>89- [] - [] - [] - [] - [] - []</p>	<p>Measuring range in mbar: 50 100, 200, = standard 250, 400, 500, etc.</p>
	<p>H = PE cable, blue shielded P = PUR cable, black</p>
	<p>Cable length in m: 06 = 6m (without Additional Charge) 10 15, 20, 25, etc.</p>
	<p>K1 = Stainless steel, with protective cap K0 = Stainl. steel, open, no protective cap Y0 = Plastic PP, open, no protective cap</p>
	<p>EX = ATEX option</p>

